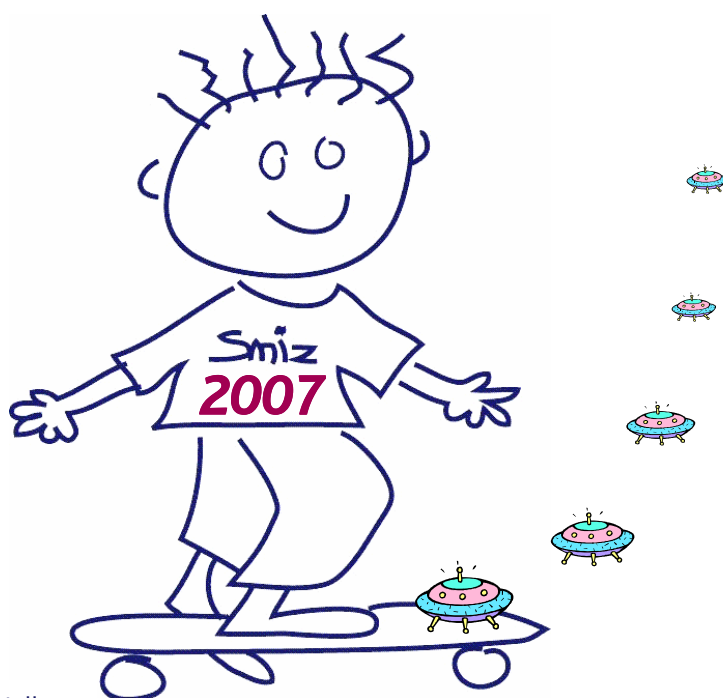




Smiz kids

may holiday club



The Village Hall
Main Street
Smisby
Ashby de la Zouch
Leicestershire
LE65 2TY

Telephone: 01530 416279 Extension 16

Fax: 01530 564415

Email: smizkids511@smisbydaynursery.co.uk

Website: www.smisbydaynursery.co.uk

The Smiz Kids 511 Holiday Club will Run

From: Tuesday 29th May

To: Friday 1st June

Holiday Scheme Rates:

Price per Day:	£28.25
Price per Half Day:	£17.00
Price per extra hour:	£6.75

Sibling discount: 10% for each child

These prices include all meals, except for full day trips out, where children must bring a packed lunch for the day

DEPOSIT REQUIRED: £80.00 per child.

If the full placement is less than the deposit, please send payment in full.

Any deposits will be deducted from your last payment.

Please complete the booking form in the centre of this booklet and return it to the Nursery,

PLEASE RETURN BY 21st May to avoid disappointment

- Any cancellations **MUST** be paid for after confirmation has been sent out
- Any forms not received by this time will have to take spaces available
- As demand is high we prioritise for full time children

Smiz Kids 511 May 2007 Booking Form

Please remove the centre four pages, complete where relevant and return with a deposit of £80 **for each child** made payable to Smisby Day Nursery Limited.

The value of the deposit will be deducted from your last payment.

Parents of children who attend the After School club on a regular basis need not send a deposit.

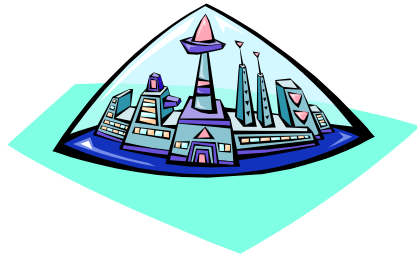
If the total booking is less than the deposit please send payment in full.

Please ensure you clearly circle all trips you authorise your children to attend.

Name of child 1						
Name of child 2						
Name of child 3						
Address						
Town						
County			Postcode			
Home						
Daytime Tel No						
D.O.B. 1		D.O.B. 2		D.O.B. 3		
Child 1	Swimmer / Non-Swimmer *					
Child 2	Swimmer / Non-Swimmer *					
Child 3	Swimmer / Non-Swimmer *					
<i>* Please indicate clearly if your child is a swimmer or non swimmer</i>						

Week Beginning 28th May 2007

PLEASE TICK The days you Require.	FULL DAY	HALF DAY 9am-1pm	HALF DAY 1pm-5pm
Monday 28th May	CLOSED		
Tuesday 29th May			
Wednesday 30th May			
Thursday 31st May			
Friday 1st June			



Sci-Fi
Week



Smiz Kids 511 Booking Form

I consent to my child/ren attending all trips as booked on this form.

I consent to my child/ren visiting the Playing Field in Smisby in supervised groups and to use the play equipment thereon.

I have provided a contact number for use in an emergency during the daytime.

My child/ren is/are well enough to attend the club at the start of each day they attend.

My child/ren will bring relevant clothing for all trips including towels, swimwear, goggles, hats and sunscreen.

I accept that any cancellation after confirmation of booking must be paid for in full.

I have made myself aware of all of the policies of the club and I have signed all appropriate consent forms for my child/ren.

I agree to make payment of fees promptly when they are due.

Failure to pay fees in advance will result in a late payment charge of £5.00 per day plus a removal of all discounts applied for the club.

Parent/Guardian Signature	
Print Name	
Date	

Office Use only

Deposit Amount Paid	Date	Cash/Cheque?
---------------------	------	--------------

Booking entered onto System	Date
-----------------------------	------

Ideas, suggestions, and comments for the website!

Know of a great day out?

Know somebody interesting who would like to tell children about their hobby/job/interest?

Seen a theme used elsewhere that worked really well?

Got any great ideas or recipes? Do you think we can do anything better?

If so—we would love to hear from you. We constantly strive to make Smiz Kids 511 better for the children who use it. To that end we need input from as many people as possible to make these changes.

We also have a page on our website where we publish comments made by both parents and children who use the club. If you want us to put your comments on the website just write them down below and give them to us, and we will put them on the website.

Your Comments

	AM	PM
Week Beginning 28th May 2007		
Monday 28th May	<h1>CLOSED</h1>	
Tuesday 29th May	Space Cakes 	 Junk Modelling - Space Station
Wed 30th May	3D Glasses 	 Design a planet
Thursday 31st May	 Futuristic Transport	 Design & make a space suit
Friday 1st May	Monsters / Aliens 	 Glitter Stars

Additional Notes

Any films shown in the club are Certificate U and certificate PG only.

Children are not allowed to bring mobile phones into the club under any circumstances. Phones will be put in a safe place and returned to parents at the end of the day.

Any electronic items brought into the club are done so entirely at your own risk. All such items must be able to run from an independent power source, i.e. batteries, and cannot be connected to mains power in the club.

Any film, Playstation game or games cartridge brought into the club must be an original licensed version. Copies must not be brought into the club under any circumstances and must be an appropriate certificate. **(No 11+ or above).**

Children from School age upwards are catered for. The usual limit for the club is 11 years but children over this age are welcome providing they enjoy the club. Sometimes children over this age can become disruptive, bored or display inappropriate behaviour. In this case we will advise parents of this in order that they can find alternative care. This is a matter of Health and Safety.

A hot lunch is provided at lunchtime and a snack tea in the afternoon (Sandwiches, crisps, cakes etc.). The snack tea in the afternoon is not meant to be a meal replacement for the evening meal. Children must bring a packed lunch for any full day trips. All other drinks and snacks are provided.

Thank you

Liz

Out of School Club
Co-ordinator



The village hall opposite the school